

THE ART OF
DESIGN

LUXURY HOME INTERIORS

£4.95 • ISSUE 60



2023 INTERIOR DESIGN TRENDS /
ARTFUL PENTHOUSE IN BOSTON /
JANUARY FURNITURE SHOW

SEAFRONT DUPLEX

OTOMI STUDIO



A bespoke design where comfort and nature meet. A two floor apartment overlooking the Mediterranean sea, where well-being aligns with design providing unique sensations in an elegant space.

Kitchen, living and dining united by materiality, lighting design and furniture selection

Referring to essential materials such as timber and stone, and having a panoramic levitated seaview, we were able to convey the sense of privacy and solitude in nature. Contemporary space was created by engaging pure forms and volumes which bring elegance enhanced by technology.

The choice of wall coverings was guided by earthy and timber tones to give the occupant the feeling of warmth, especially through the decorative timber panels, which in addition to making the environment cosy produce a particular aesthetic and acoustic perception. The choice of wallpapers refers to the natural elements of laguna, foliage and animal kingdom. The floor is made of wide

parquet planks running perpendicular to the main facade through the entire apartment. Marble themed ceramic tiles dialogue harmoniously with each other and the rest of interior elements. Brushed bronze & brass accentuate the decor throughout the project. Rimadesio doors covered in fluted walnut timber or amaranto leather blend with decorative timber panels. All of the doors and openings are frameless, cut into the continuous surface of the wall coverings.

Materials and various lighting combinations play an important role in creating an interior atmosphere that turned out to be warm and inviting. In the search for a cosy environment, lighting was used to highlight

the areas and enhance the mise en scene of design pieces and decorative elements. The entire technical lighting solution was provided by Delta light, resulting in a sophisticated and harmonious environment. Following the concept of space, we have used decorative lights that are inspired by organic and natural shapes from Tom Dixon, Axolight, and Sylcom.

The project works with home automation, dimmable controls, motorised curtains and blinds, and integrated ceiling speakers. The technologies are intentionally concealed, and therefore, practically invisible, and remain a hidden force in the apartment's backbone.

Spiral staircase hammered bronze railing



Illuminated spiral staircase steps and entrance corridor

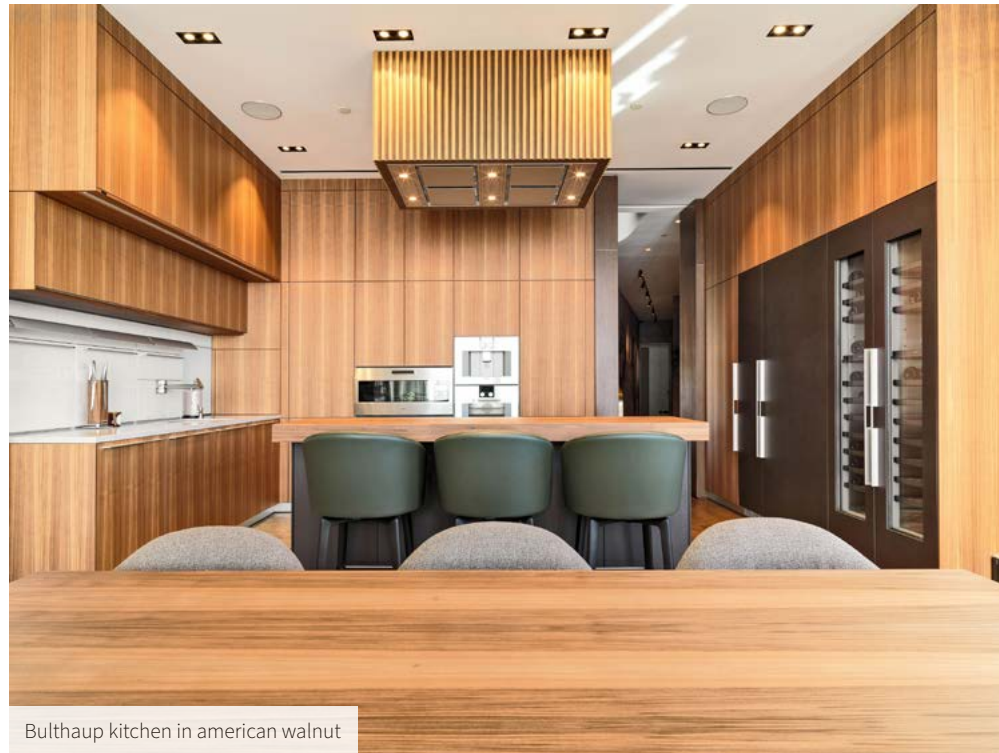


Blown glass fish elements



Upon entering the duplex you are greeted by a custom made spiral staircase made of hammered bronze railing on the outer side and Pirarucu fish skin inspired timber veneer on the inner side. The floating oak steps are illuminated at night. The bottom of the staircase is dressed in the same oak as the steps to bring in the feeling of the single solid timber volume entrapped between the railings. This installation is enhanced by a Sans Souci chandelier consisting of 84 piece blown glass fish like elements floating through the centre of the stairs. The side wall of the entrance area is made of teak timber cut out in a form of sea waves and in the background we can see the wallpaper with shimmering shoals of fish.

Arriving at the kitchen, which is integrated into the dining and living open space, we have a Bulthaup designed solution, with a mix of natural walnut for the storage cabinet doors and dark structure oak for the kitchen appliance doors as well as the island bar. London Grey Ceasastone countertop matches flawlessly with the rest of the material selection. The client adores high quality cooking and was looking for something with monolithic aesthetics and practicality in operation. One of the challenges was to distribute all the kitchenware and dishware, for that reason we have raised the kitchen height from standard to ceiling height.



Bulthaup kitchen in american walnut

This kitchen is providing maximised functionality of internal storage and function integration of Gaggenau kitchen appliances. The bar island hosts electrical induction as well as gas cooktops with custom made hood that matches the american walnut solid wood bar counter.

The Rimadesio dining table, coupled with the Atomic Chandelier by Delightfull, shows the transforming power of open space. The living and dining room is united by custom made linear low wall storage drawers with Rosso Portogallo marble top. The linearity

is only interrupted to insert the Bang & Olufsen television and speakers. Several patterns and textures have been introduced into the living space via the Minotti sofa armchair, bench and coffee table with marble, wood and fabrics of varying shades and pillows with accent colours.

The dining and living room is connected to the veranda through a sliding glass door, generating a feeling of spaciousness and clarity. When you pass this boundary, an intimate space is created that provides a refuge and contact with nature.

Solid teak furniture, iroko ceiling with starry sky lighting layout and wall finish from clay tiles.

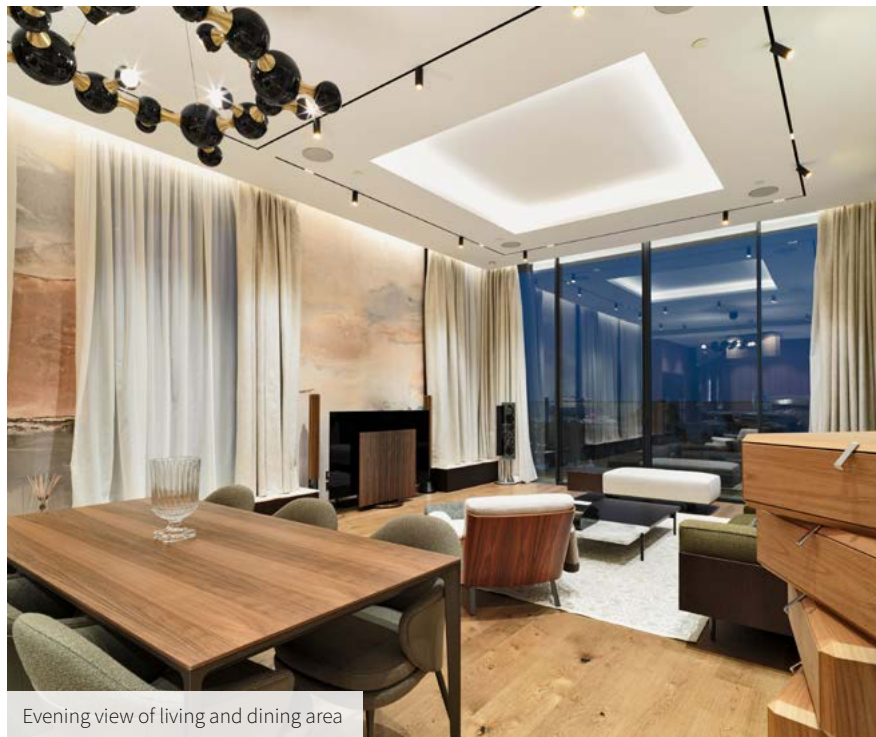
The elevated bed podium in the master bedroom represents the refuge and tranquillity. It offers an even better view of the Mediterranean horizon. The background of the bed is backlit faux onyx with emerald tones and on each side of the bed there is a pendant Axo Light Mountain View chandelier. This mise en scene is symbolic; blue sea view in front and green forest of Troodos mountains behind. Adjacent to the master bedroom is a semi outdoor terrace for intimate relaxation time surrounded by

lush green plants and floral pattern tiles.

The Rimadesio walk-in wardrobe acts like a transition space between the bedroom and bathroom. It is seamlessly integrated together with custom made decorative wallpanels and frameless doors. It has been intricately designed, down to the smallest detail based on the client's habits and lifestyle nuances. The dominant material here is grey reflective glass that creates a game between openness, semi-transparence and preservation. The space generating, cutting-edge wardrobe system completely redefines the spatial layout and provides minimalism, elegance as



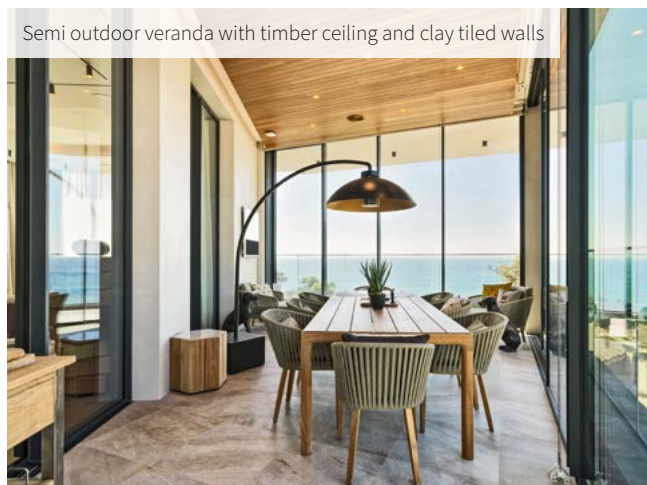
Bedroom sitting area



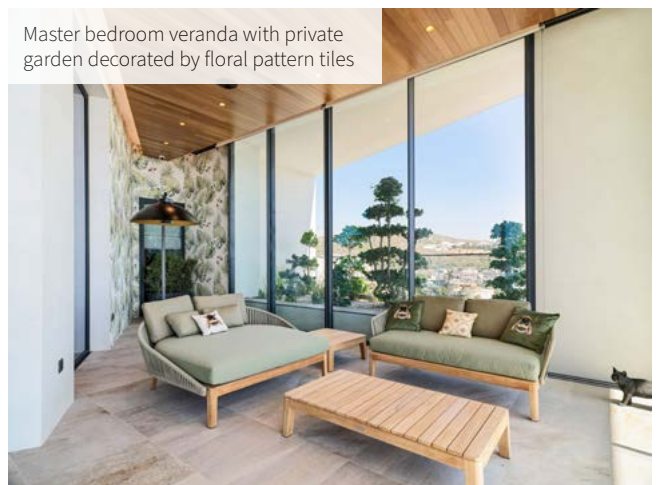
Evening view of living and dining area

well as plenty of beautiful storage floor to ceiling. The integrated lighting provides an optimum view of the items stored in the wardrobe through a beautiful prism of decorative glass and creates an exciting warm light lantern effect. Centre piece of this room is the levitating island that looks sophisticated and mysterious under the colourful pendants of the chandelier.

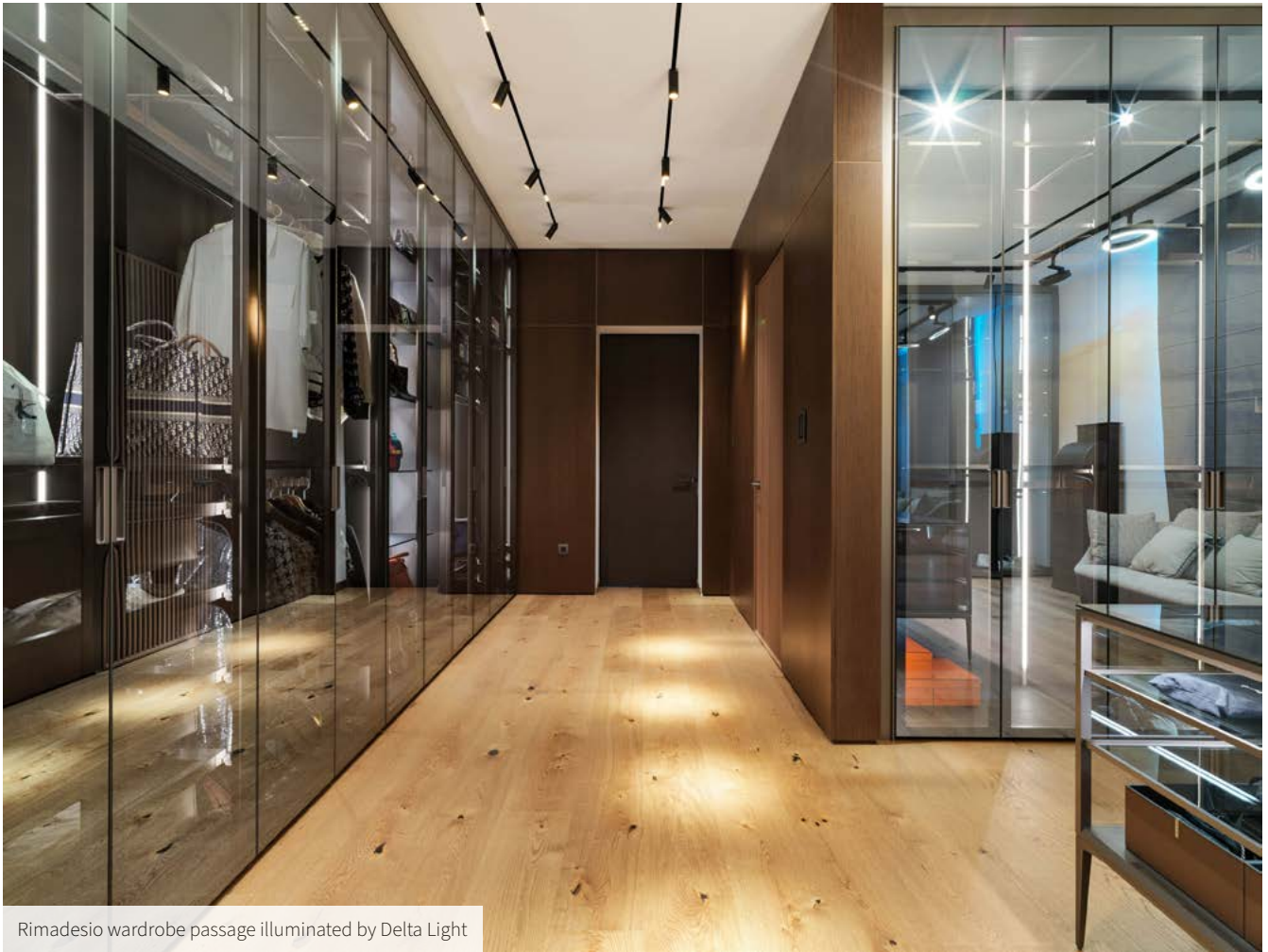
The room has two major marble tones: Verde Alpi on the floors and backdrop wall, Calacata Elite on the rest of the walls. We conceived a custom-made vanity made of teak and fluted oak that is completely symmetrical, with giant full height mirrors that multiply an already grandiose space.



Semi outdoor veranda with timber ceiling and clay tiled walls



Master bedroom veranda with private garden decorated by floral pattern tiles



Rimadesio wardrobe passage illuminated by Delta Light

The integrated led backlight of mirror frames creates a mystical portal that reflects the free form chandelier between the vanities and above the freestanding bathtub. All the sanitary fittings and accessories are in brushed bronze finish; inline with the design accents of the projects. The toilet and bidet area as well as the walk in shower are in separate spaces behind a frosted glass.

Guest Toilet is the smallest space of the apartment but nevertheless an integral part of the design flow. Organic shapes of sanitary ware and fittings take over the small rectangular space surrounded by arabescato orobi-co walls and enlightened by pendant lights.



Timber ceiling above decorative illuminated Technografica panels